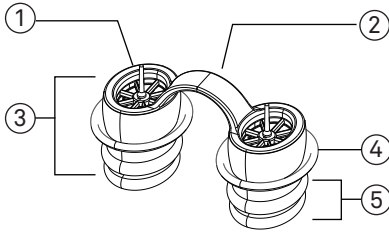


ZEEPAP Nasal Dilator

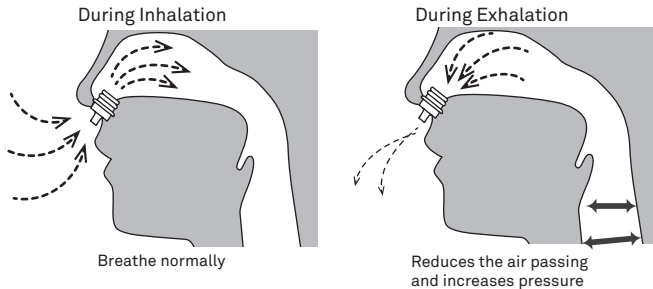
ZEEPAP includes a flow resistance adjusting element, and a nasal support element. The flow resistance is designed to limit exhaling flow to reduce noise.

Components

- ① Valve Seat
- ② Bridge
- ③ Nasal Insert
- ④ Soft Flange
- ⑤ Double Hump



How ZEEPAP Works



Intended Use

ZEEPAP is intended to gently expand your nasal passages to open nasal airways during sleep to increase airflow through your nose. The expiratory flow resistance lowers the exhaling flow, increases the airway pressure, and reduces breathing noise.

Contraindications

This device is contraindicated for users with the following conditions:

- An acute upper respiratory (including nasal, sinus, or middle ear) inflammation or infection
- Severe breathing disorders include hypercapnic respiratory failure, respiratory muscle weakness, pneumothorax, pneumome diastinum, etc.
- Severe heart disease (including heart failure)
- Pathologically low blood pressure

Warnings

- Carefully read, understand, and follow directions before use.
- As with all intranasal devices, there are inherent risk factors associated with using them. You should proceed with extreme caution while using this product and regularly examine it before and after each use for any defect that may present a potential health hazard.

- Users who develop nasal, sinus, ear infections or inflammation, redness or irritation of the nose or skin, or experience any breathing difficulties after using the device should discontinue the use of the device and contact a physician. Assessment of effectiveness and follow-up evaluation should be conducted to ensure good result.
- This device is a single-user application and not be shared with others to avoid cross contamination.
- Do not attempt to sterilize or use disinfectants on this device.
- Make sure that all Nasal Inserts are free of any obstructions.
- Not suitable for use if under the age of 18. Persons under the age of 18 must consult a doctor before use.
- Keep out of reach of children.
- Carefully inspect each component for any wear or damage.
- Discontinue use and replace if you notice any cracks, weakening, or discoloration.
- Do not break the Bridge or use one of the Nasal Inserts on its own.
- Do not pull or twist the valve seat. If the valve seat or valve is twisted or falls off, please stop using it and replace it.
- Do not use it for more than 12 hours a day.

Applying the Device

1. Clean your nasal passages to maximize airflow if desired. Blowing your nose and nasal irrigation may work well.
2. Clean your nasal dilator as described in the Cleaning and Storage Instructions to eliminate germs and for fitting lubrication.
3. Insert the Double Hump of the Nasal Inserts into your nostrils. Proper placement is essential for performance and comfort.
4. To remove the device, gently pull the Nasal Inserts out of your nose.
5. As your ZEEPAP conforms to your nose, you may feel light pressure or tickle, which quickly subsides. It is natural to feel tenderness initially. Please be patient during this 1-2 week adjustment period. If necessary, delay uses to alleviate discomfort. Resume use after a 24-hour rest period.

Cleaning & Storage

- Immediately after each use, thoroughly clean with cool water and mild soap. Avoid hot water. Rinse all components and shake out excess water from inside the Nasal Inserts. Thoroughly rinse again before use.



The Nasal Inserts should be washed after each use.

Caution: Only use pure, unscented soap. Do not use alcohol, petroleum

products, or strong cleaners. Do not machine wash, scrub, or wipe any component. All of these may cause damage and reduce the life of the product.

- Allow all components to completely air-dry before storing at room temperature. Store the device in a dry, ventilated place out of direct sunlight.

Description of Symbols



Manufacturer



Batch code



Medical device



Non-sterile



Keep dry



Date of manufacture



Do not use if package is damaged and consult instructions for use



Storage/Transport humidity Limits



Storage/Transport temperature limits



Consult instructions for use



Unique Device Identifier



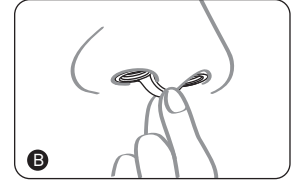
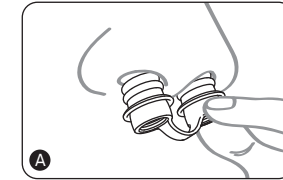
Warning or caution



Keep away from sunlight

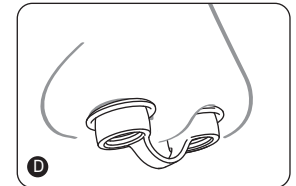
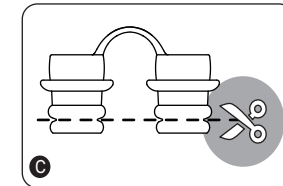
Quick Start Guide

- A** Gently and properly slide the Nasal Insert back and forth into your nostril by placing the Double Hump as shown in fig A. Humidifying may be considered for lubrication.(fig. A)
- B** To achieve an optimal fit, you may need to adjust the placement by gently pulling or pushing the Bridge with your fingers.(fig. B)



- C** For a better experience, if the Nasal Insert is too long, you may cut off a loop of the Double Hump. Please cut smoothly along the groove between the Humps when trimming and avoid producing sharp edges.(fig. C)

- D** For the smaller nostrils, without compromising safety and efficacy, the Nasal Inserts can be plugged into until the Soft Flange touches the outside of the nostril, rather than fully inserted.(fig. D)



Specifications

Model : Z02
Type : M1/M2/M3
Material : Silicone/PC

Storage/Transportation

Temperature : -25°C ~ 50°C
Humidity : 15~93% (Non condensing)



Warranty: 30-day limited warranty from the date of purchase.



Manufactured by

SOMNICS

5F, No. 22, Sec. 2, ShengYi Rd, Hsinchu Science Park,
Zhubei City, Hsinchu County, 30261, Taiwan
United States Customer Service
TEL : +1-833-766-6427(+1-833-SOMNICS)
FAX : +1-833-847-2009
Email : countact.us@somnics.com

Designed and Made in Taiwan. Patent Pending.